



## ENCLOSURE

# WiBOX Medium Slim

Aesthetic **WiBOX** series design predisposes **Medium SLIM** model to be installed indoor and outdoor. **WiBOX Medium SLIM** has the **IP67** protection level it's achieved by special sealing system, what makes it resistant for any weather conditions. It's great for standard or **custom embedded** installations. **WiBOX Medium SLIM** has also 4 additional holes to install up to 4 another antennas on the connector panel. The enclosure has the installation compartment matching for PCB (electronic board), the compartment dimensions are **180 x 174 x 35 mm**. **WiBOX Medium Slim** comes with made with fiberglass **WiMount** mounting system. The system can be ordered with any antenna board from **Wireless instruments** offer which corresponds with this box type. **WiBOX Medium Slim** can be provided also with outer connectors.

ROHS



### Mechanic specification

Outer dimensions	27 x 27 x 6.2 cm 10.63 x 10.63 x 2.44 inch
Inner dimensions	16 x 17.4 x 3.5 cm 6.3 x 6.85 x 1.38 inch
Weight	1.4 kg
Connector	RJ45
Material	ABS (UV Resistant)
Operating temperature	from -20°C to 80°C from -4°F to 176°F

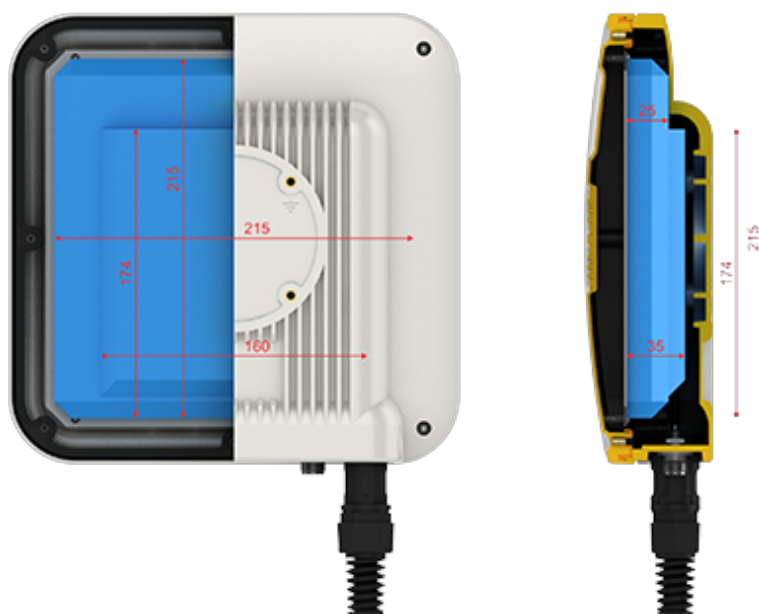
### Features

- › Big, ergonomic and voluminous for radio equipment installation.
- › Outdoor Waterproof
- › Designed and resistant for any weather conditions
- › Wall or pole mast mounting
- › Wodoszczelny system RJ45
- › No. 4 connector holes
- › Grounding cable system protecting against lightning - DC Ground
- › 36 Warranty Months

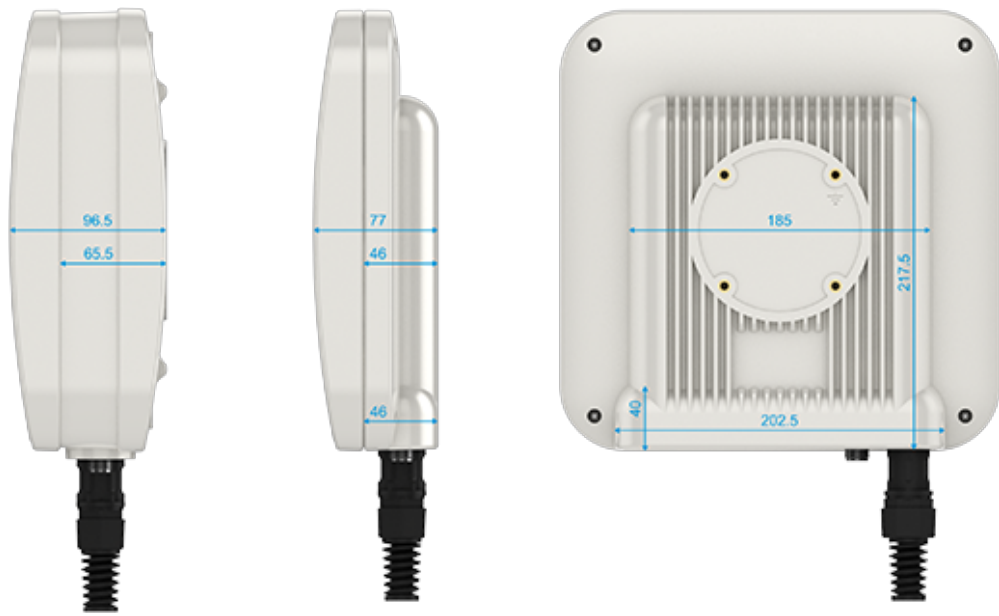
### Packing details / Material: Carton

	Dimensions	Weight
WiBOX Medium Slim	31 x 28 x 10 cm / 12.2 x 11.02 x 3.94 inch	2.5 kg

## Technical draws WiBOX Medium Slim



Inner dimensions **WiBOX Medium Slim**



Outer dimensions **WiBOX Medium Slim**